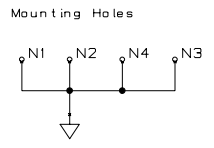
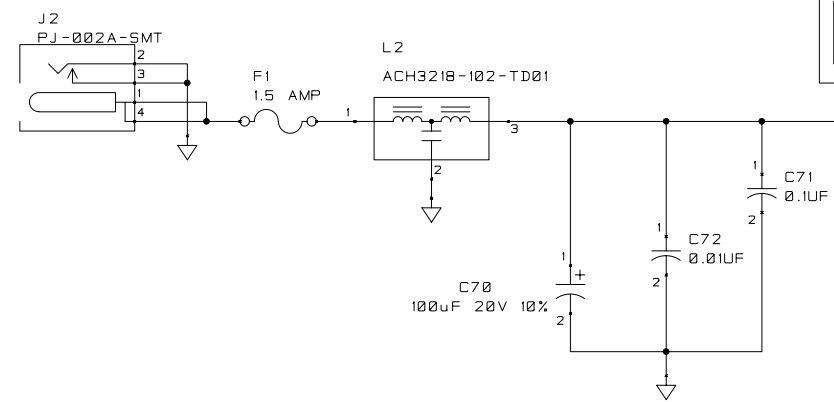
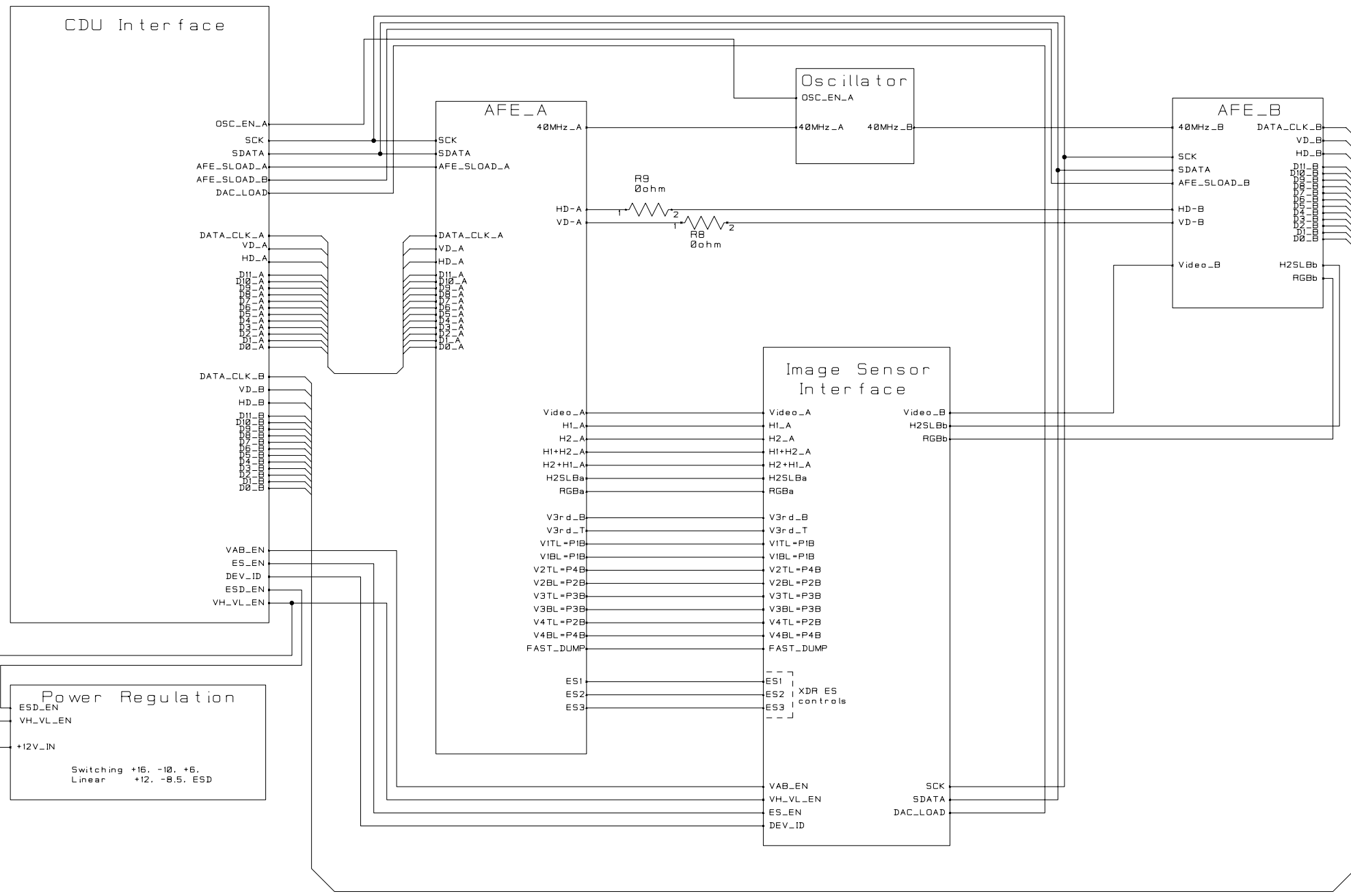
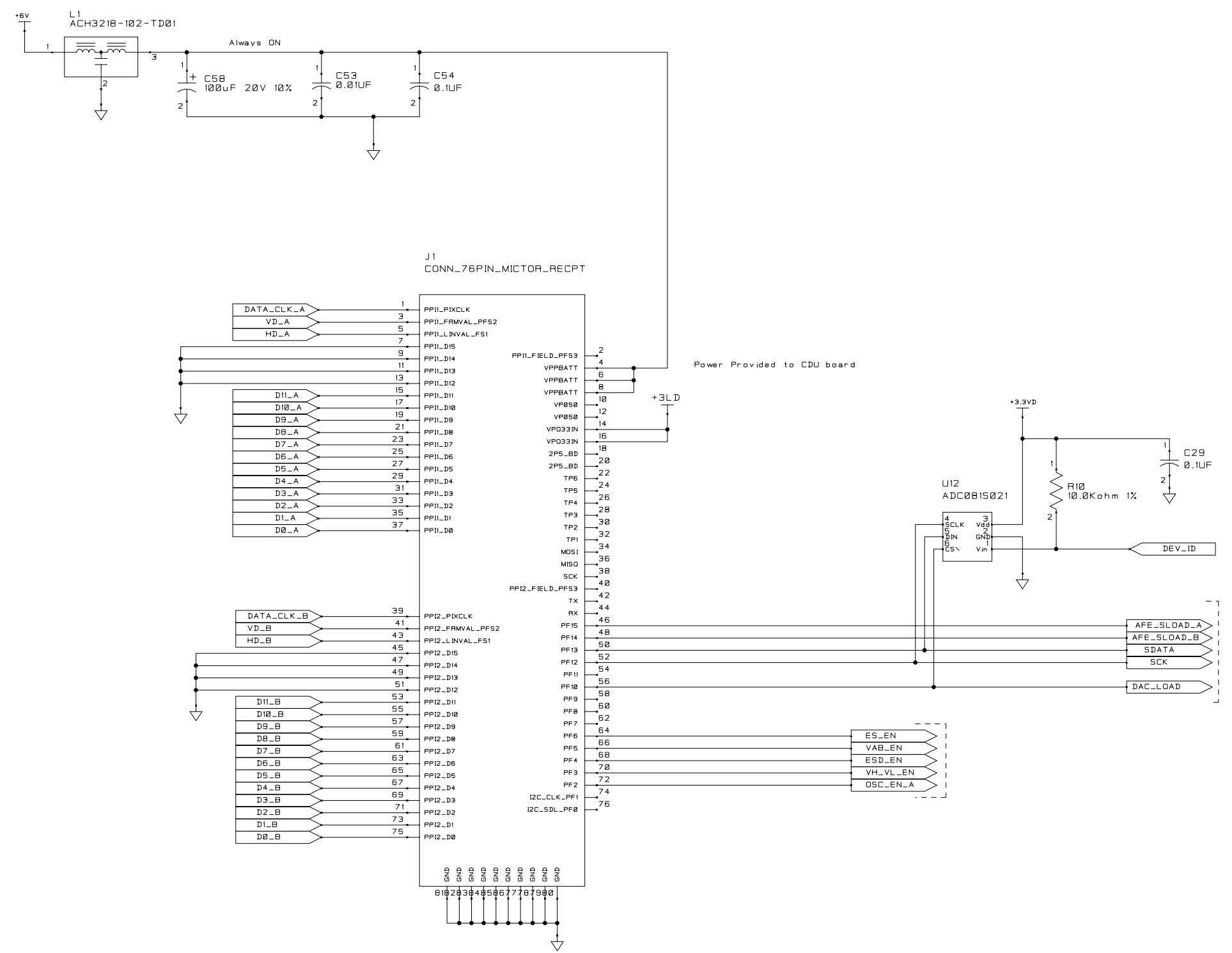


REVISIONS				
ZONE	SYM	DESCRIPTION	DATE	APPROVAL



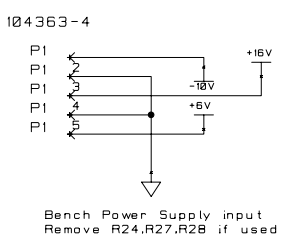
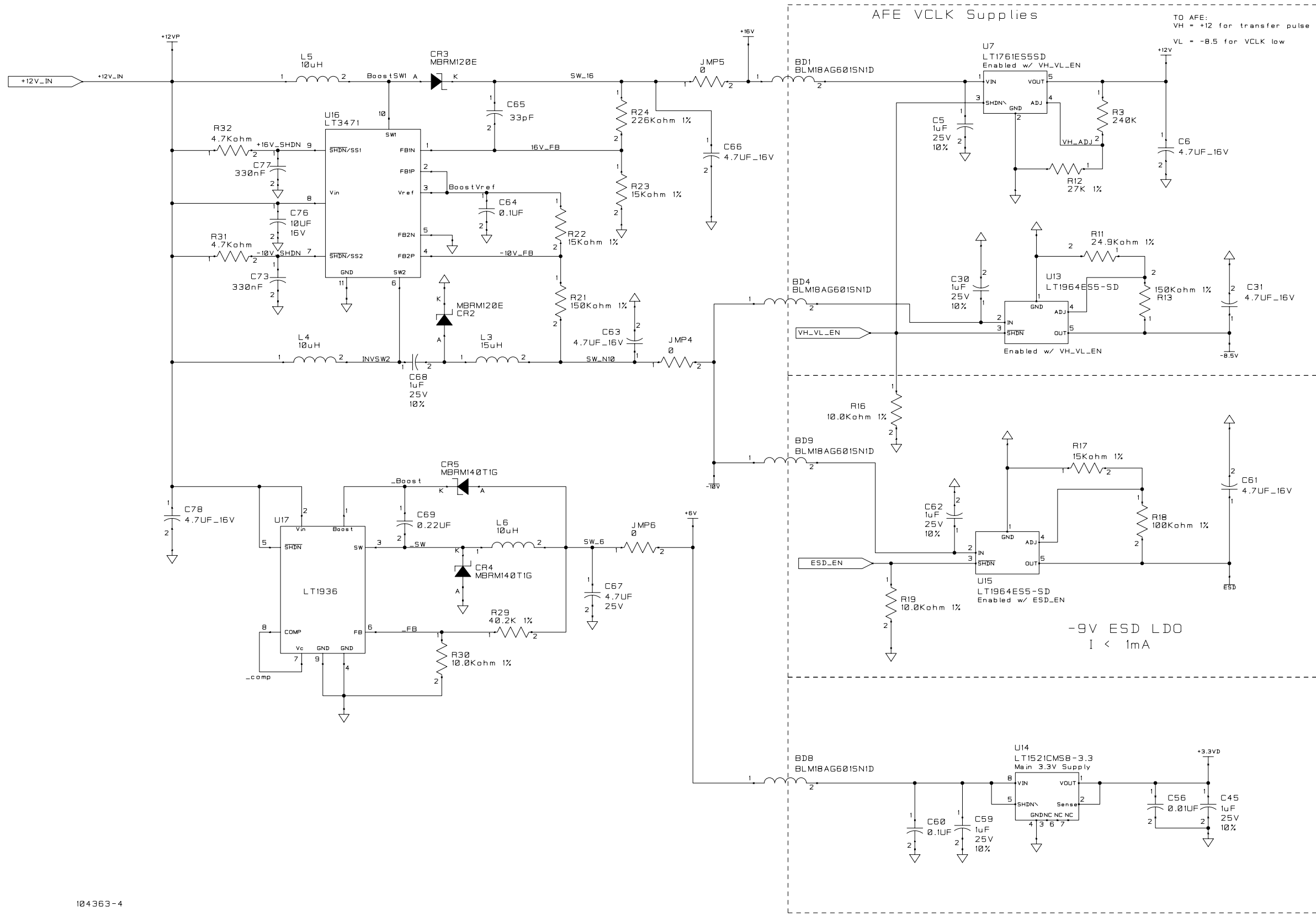
UNLESS OTHERWISE SPECIFIED				MATERIAL	DIMENSIONS APPLY AFTER FINISH WHERE TOTAL TOLERANCE IS .001 INCHES OR LESS AND ON ALL THREADS. IN ALL OTHER PLACES DIMENSIONS APPLY BEFORE FINISH.	Eastman Kodak Image Sensor Solutions	
						NAME	CCD CDU Timing Board
					DR		
					QA CHK		
					ENGR	j d ib ella	
					ENGR		
					ECN NO.	see MTD/PS-1046	
					REL DATE	10/29/2008	
					SIZE	D	
					DWG NO.	20342411 REV-3	
					SCALE		
					PROGRAM	CADSTAR	
					SHEET	1 of 7	

REVISIONS				
ZONE	SYM	DESCRIPTION	DATE	APPROVAL



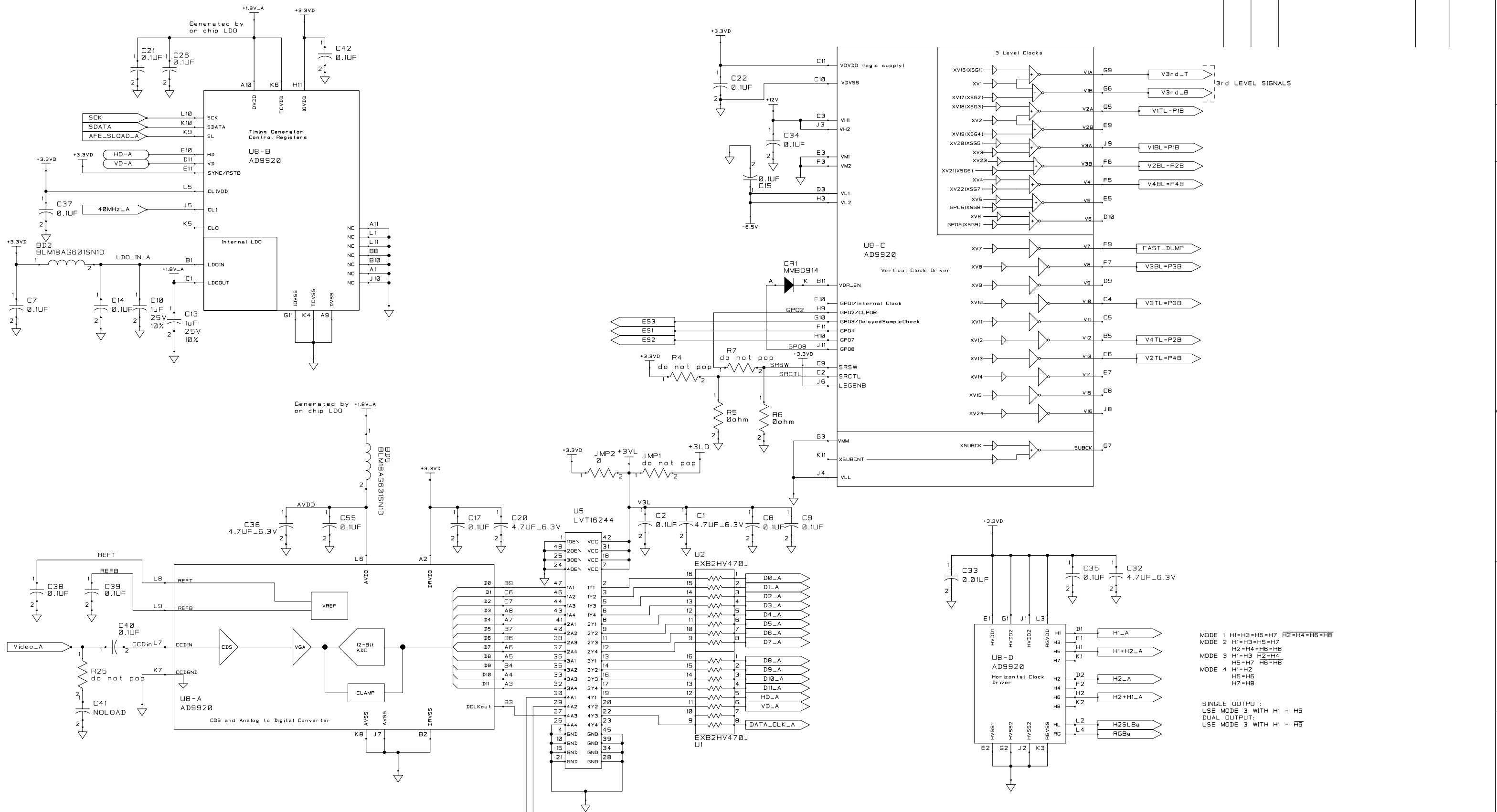
UNLESS OTHERWISE SPECIFIED				MATERIAL	DIMENSIONS APPLY AFTER FINISH WHERE TOTAL TOLERANCE IS .001 INCHES OR LESS AND ON ALL THREADS. IN ALL OTHER PLACES DIMENSIONS APPLY BEFORE FINISH.	Eastman Kodak Image Sensor Solutions	
DIM. ARE IN				FINISH		NAME	CCD CDU Timing Board
2 PL DEC TOL ±					✓	DR	Frame Grabber Interface
3 PL DEC TOL ±				DEVIATIONS FROM INTENDED SHAPE FLATNESS, ROUNDNESS, SQUARENESS ETC.) MUST BE WITHIN STATED DIMENSIONAL TOLERANCES.		QA CHK	
ANGULAR TOL ±					NEXT ASSY	ENGR	DWG NO. 20342411 REV-3
SURF ROUGHNESS				USED ON		ENGR	
EDGES					NEXT ASSY	REL DATE	SCALE
INSIDE RADII				QUANTITY		10/29/2008	
APPLICATION		QUANTITY			RECD	SHEET 2 of 7	

REVISIONS				
ZONE	SYM	DESCRIPTION	DATE	APPROVAL



UNLESS OTHERWISE SPECIFIED				MATERIAL		DIMENSIONS APPLY AFTER FINISH WHERE TOTAL TOLERANCE IS .001 INCHES OR LESS AND ON ALL THREADS. IN ALL OTHER PLACES DIMENSIONS APPLY BEFORE FINISH.		Eastman Kodak Image Sensor Solutions	
DIM. ARE IN						DR		NAME CCD CDU Timing Board	
2 PL DEC TOL ±						QA CHK		Power Regulation	
3 PL DEC TOL ±						ENGR j d ibella			
ANGULAR TOL ±						ENGR			
SURF ROUGHNESS						ECN NO.		SIZE D	
EDGES						see MTD/PS-1046		DWG NO. 20342411 REV-3	
INSIDE RADII						REL DATE		SCALE	
NEXT ASSY				USED ON		10/29/2008		PROGRAM CADSTAR	
APPLICATION				QUANTITY				SHEET 3 of 7	

REVISIONS				
ZONE	SYM	DESCRIPTION	DATE	APPROVAL

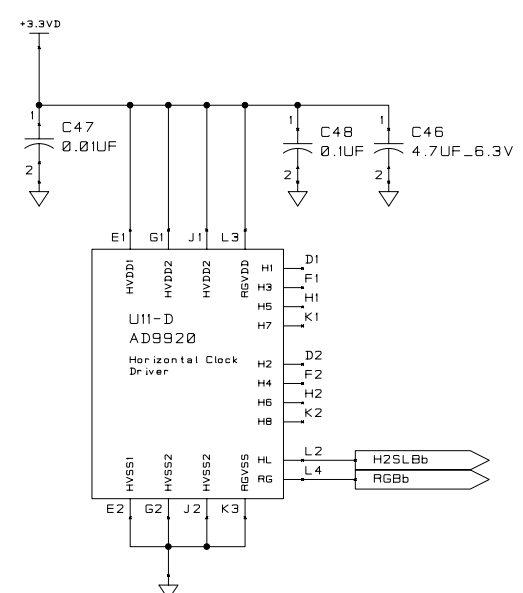
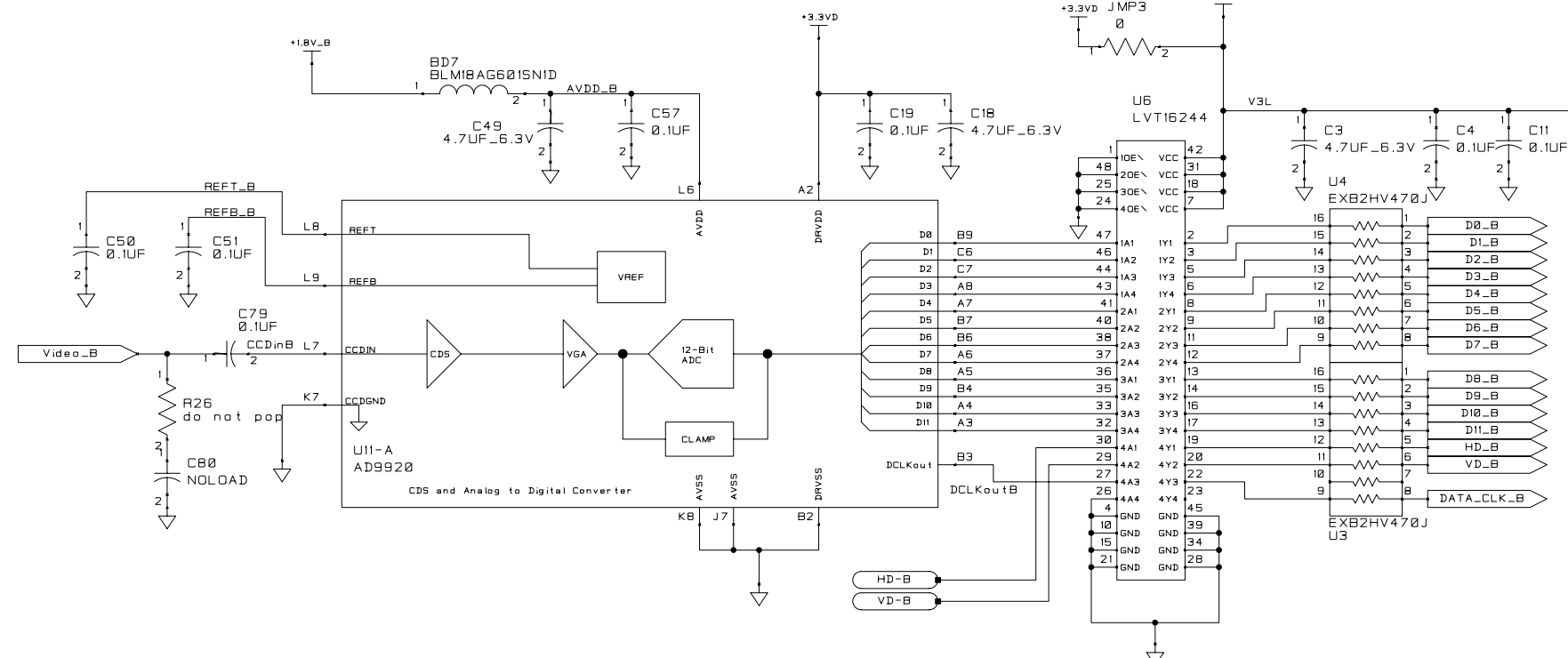
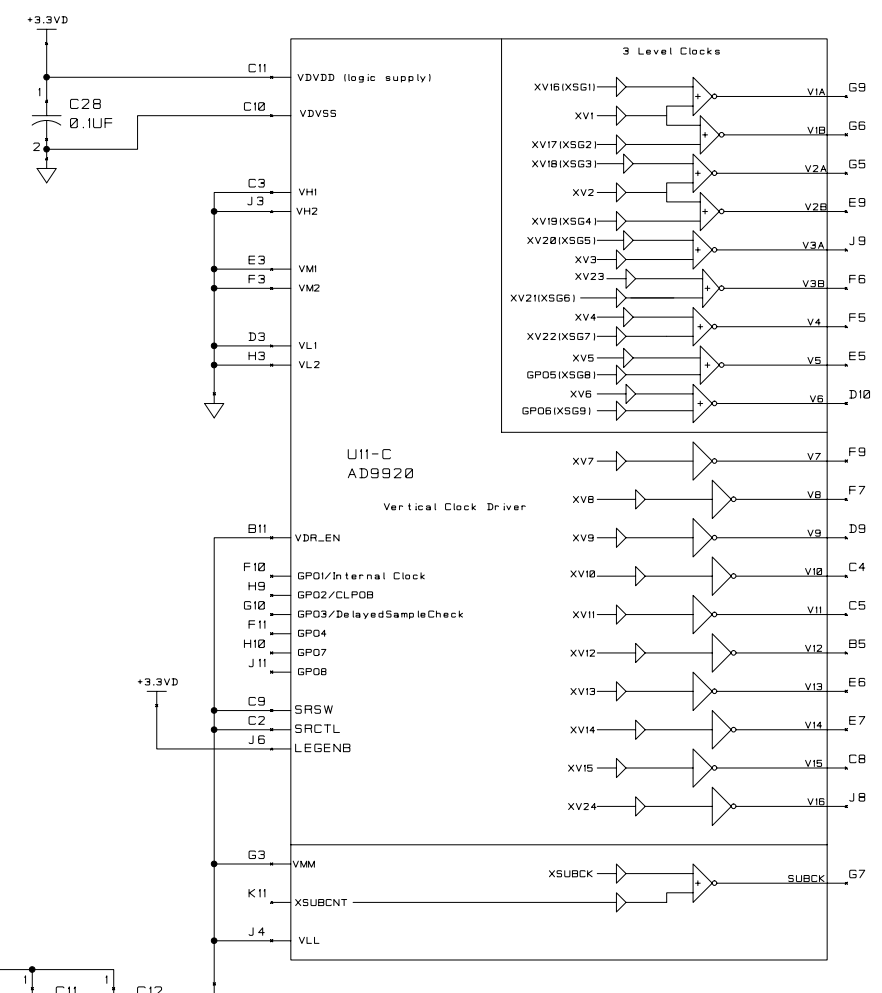
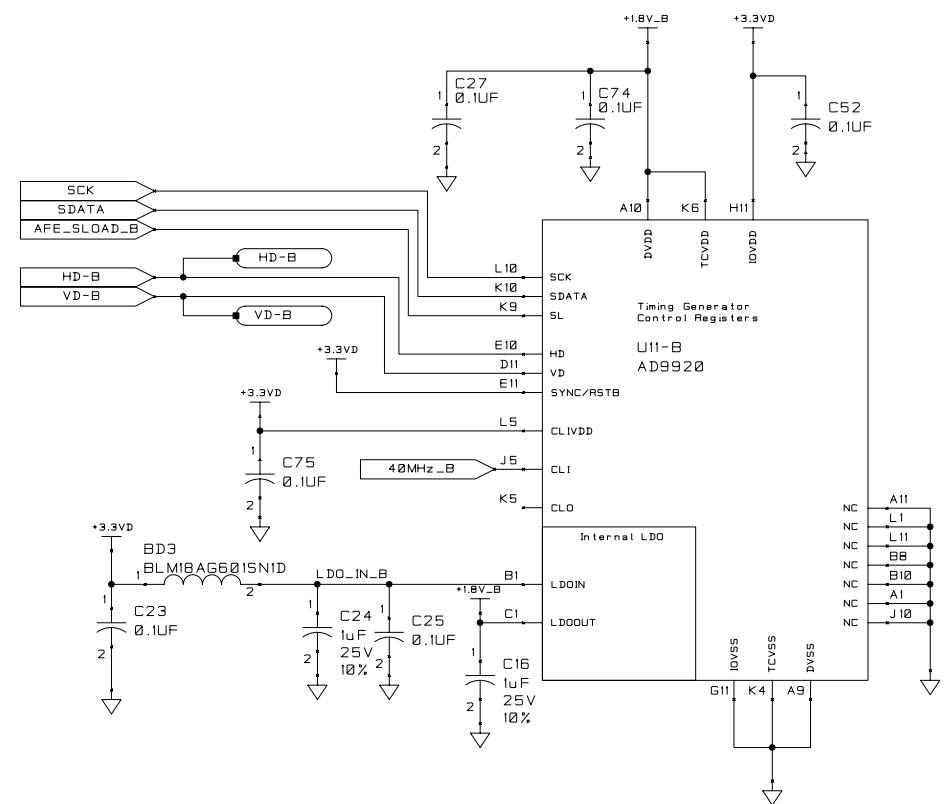


MODE 1 H1=H3=H5=H7 H2=H4=H6=H8
MODE 2 H1=H3=H5=H7
MODE 3 H1=H3=H5=H7 H2=H4=H6=H8
MODE 4 H1=H2 H5=H6 H7=H8

SINGLE OUTPUT:
USE MODE 3 WITH H1 = H5
DUAL OUTPUT:
USE MODE 3 WITH H1 = H5

UNLESS OTHERWISE SPECIFIED				MATERIAL		DIMENSIONS APPLY AFTER FINISH WHERE TOTAL TOLERANCE IS .001 INCHES OR LESS AND ON ALL THREADS. IN ALL OTHER PLACES DIMENSIONS APPLY BEFORE FINISH.		Eastman Kodak Image Sensor Solutions	
DIM. ARE IN				FINISH		DR		NAME CCD CDU Timing Board	
2 PL DEC TOL ±				✓		QA CHK		AD9920A Master Channel 1	
3 PL DEC TOL ±						ENGR		j dibella	
ANGULAR TOL ±						ENGR		ECN NO. see MTD/PS-1046	
SURF ROUGHNESS						ECN NO.		REL DATE 10/29/2008	
EDGES						REL DATE		SCALE	
INSIDE RADII						REL DATE		PROGRAM CADSTAR	
NEXT ASSY		USED ON		NEXT ASSY		FINAL ASSY		SHEET 4 of 7	
APPLICATION		QUANTITY		REORD				DWG NO. 20342411 REV-3	

REVISIONS				
ZONE	SYM	DESCRIPTION	DATE	APPROVAL

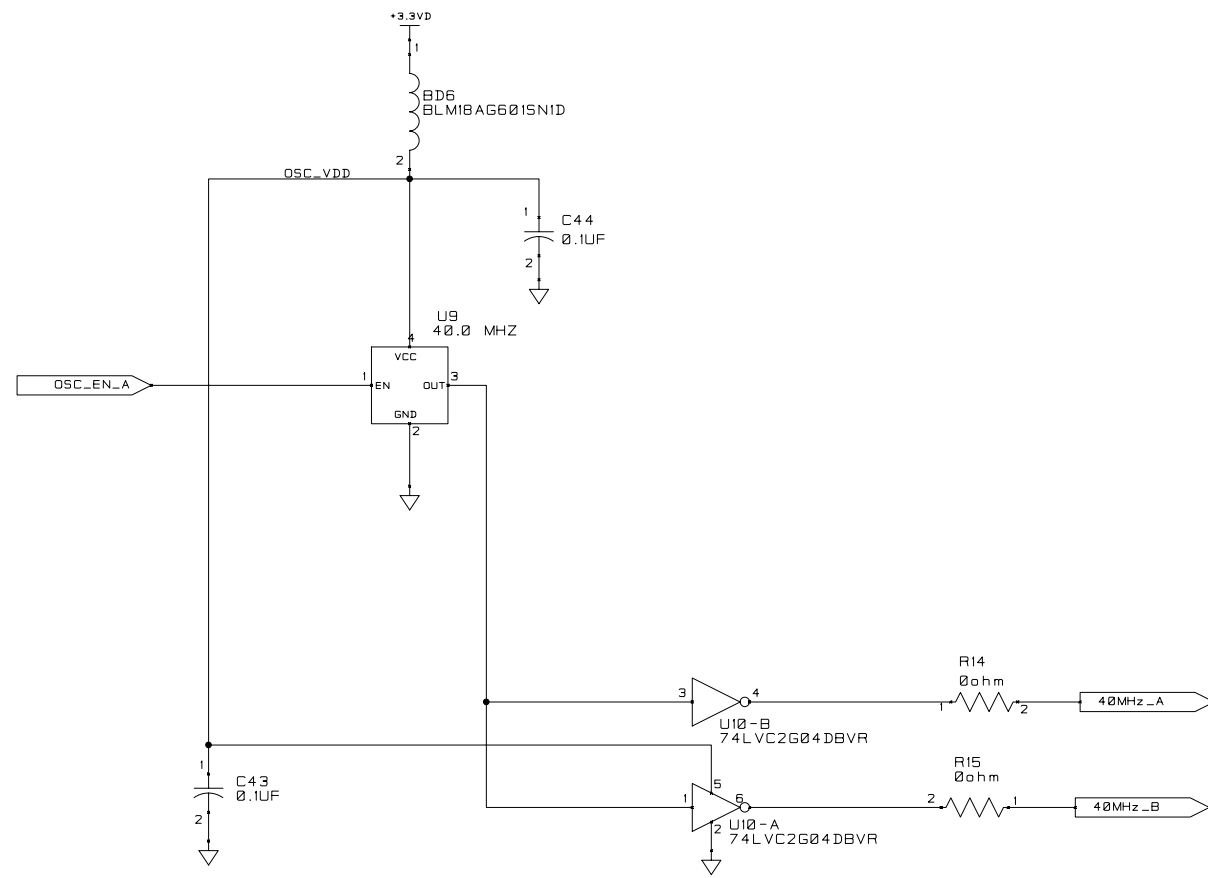


MODE 1 H1=H3=H5=H7 H2=H4=H6=H8
 MODE 2 H1=H3=H5=H7 H2=H4=H6=H8
 MODE 3 H1=H3 H2=H4 H5=H7 H6=H8
 MODE 4 H1=H2 H5=H6 H7=H8

SINGLE OUTPUT:
 USE MODE 3 WITH H1 = H5
 DUAL OUTPUT:
 USE MODE 3 WITH H1 = H5

UNLESS OTHERWISE SPECIFIED				MATERIAL		DIMENSIONS APPLY AFTER FINISH WHERE TOTAL TOLERANCE IS .001 INCHES OR LESS AND ON ALL THREADS. IN ALL OTHER PLACES DIMENSIONS APPLY BEFORE FINISH.		Eastman Kodak Image Sensor Solutions	
DIM. ARE IN				FINISH		DR		NAME CCD CDU Timing Board	
2 PL DEC TOL ±				✓		QA CHK		AD9920A Slave Channel 2	
3 PL DEC TOL ±						ENGR j.dibella		SIZE D	
ANGULAR TOL ±						ENGR		DWG NO. 20342411 REV-3	
SURF. ROUGHNESS						ECN NO. see MTD/PS-1046		SCALE	
EDGES						REL. DATE 10/29/2008		PROGRAM CADSTAR	
INSIDE RADII								SHEET 5 of 7	
NEXT ASSY	USED ON	NEXT ASSY	FINAL ASSY	DEVIATIONS FROM INTENDED SHAPE FLATNESS, ROUNDNESS, SQUARENESS ETC.) MUST BE WITHIN STATED DIMENSIONAL TOLERANCES.		REL. DATE			
APPLICATION		QUANTITY	REQD						

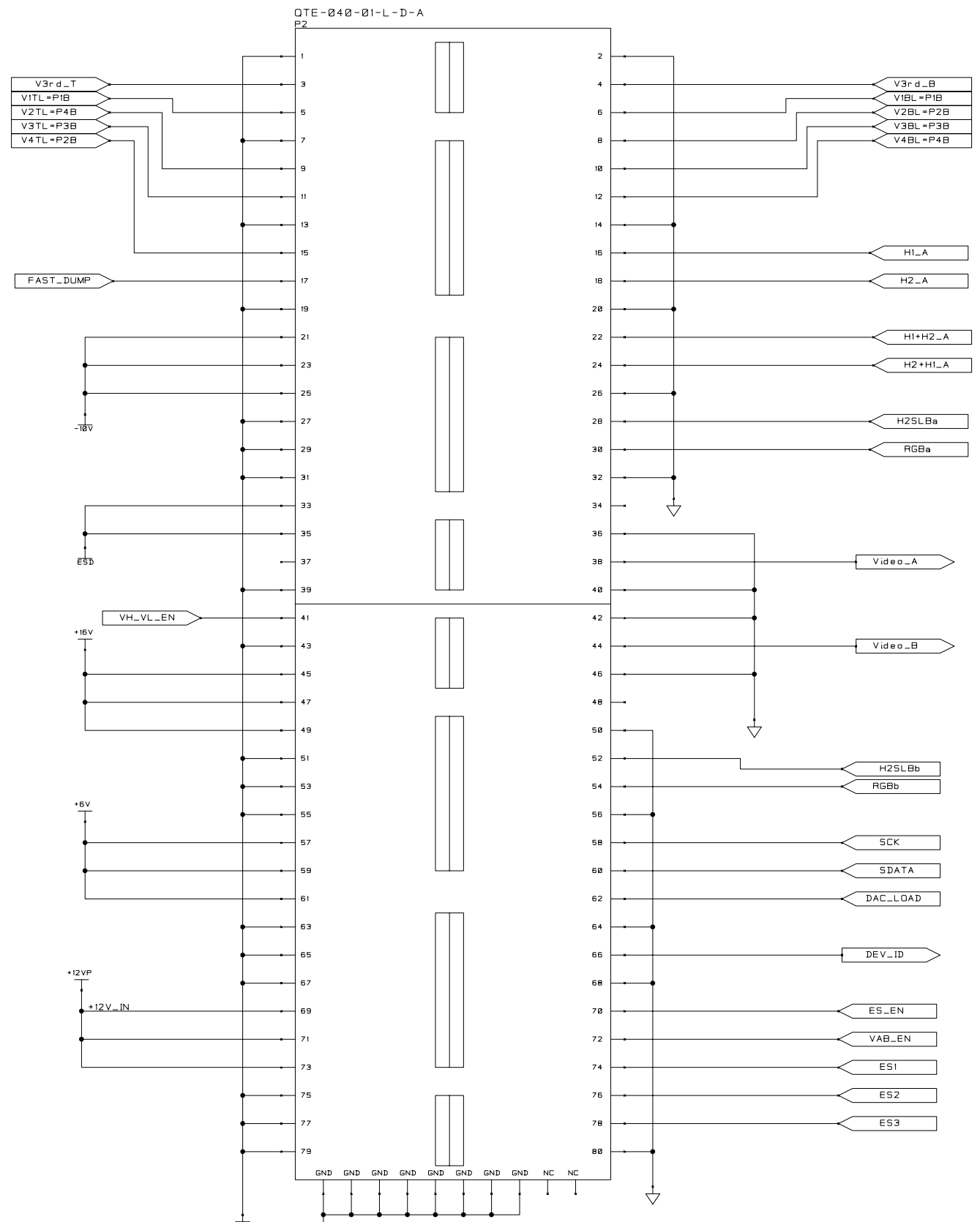
REVISIONS				
ZONE	SYM	DESCRIPTION	DATE	APPROVAL



UNLESS OTHERWISE SPECIFIED				MATERIAL	DIMENSIONS APPLY AFTER FINISH WHERE TOTAL TOLERANCE IS .001 INCHES OR LESS AND ON ALL THREADS. IN ALL OTHER PLACES DIMENSIONS APPLY BEFORE FINISH.	Eastman Kodak Image Sensor Solutions	
					DR	NAME CCD CDU Timing Board	
					QA CHK	Oscillator	
					ENGR j d ibella		
					ENGR		
					ECN NO. see MTD/PS-1046	SIZE D	DWG NO. 20342411 REV-3
					REL DATE 10/29/2008	SCALE	PROGRAM CADSTAR SHEET 6 of 7
NEXT ASSY	USED ON	NEXT ASSY	FINAL ASSY				
APPLICATION		QUANTITY	RECD				

REVISIONS				
ZONE	SYM	DESCRIPTION	DATE	APPROVAL

GND2
TV82x42



UNLESS OTHERWISE SPECIFIED				MATERIAL		DIMENSIONS APPLY AFTER FINISH WHERE TOTAL TOLERANCE IS .001 INCHES OR LESS AND ON ALL THREADS. IN ALL OTHER PLACES DIMENSIONS APPLY BEFORE FINISH.		Eastman Kodak Image Sensor Solutions	
DIM. ARE IN				FINISH		DR		NAME CCD CDU Timing Board	
2 PL DEC TOL ±				✓		QA CHK		IMAGER BOARD INTERFACE	
3 PL DEC TOL ±						ENGR j.dibella		SIZE D	
ANGULAR TOL ±						ENGR		DWG NO. 20342411 REV-3	
SURF ROUGHNESS						ECN NO. see MTD/PS-1046		SCALE	
EDGES						REL DATE 10/29/2008		PROGRAM CADSTAR	
INSIDE RADIUS								SHEET 7 of 7	
NEXT ASSY	USED ON	NEXT ASSY	FINAL ASSY						
APPLICATION		QUANTITY	REORD						

A B C D E F

Item	KODAK PN	REF DESIG	Qty	Side	GEOMETRY	DESCRIPTION
1	20339742		1			Interline Dual AFE Timing Board PCB Rev 2
2	7H8060	BD1, BD2, BD3, BD4, BD5, BD6, BD7, BD8, BD9	9	TOP	0603	FERRITE, BLM18AG601SN1D, SHIELD BEAD FERRITE, SURFACE MOUNT, LF
3	7E0938	C58, C70	2	TOP	CASE_C_AVX	CAP, 47uF, 20VDC, +-10%, CASE-C, TANTALUM CHIP, LF
4	5F7748	C2, C4, C7, C14, C17, C21, C22, C23, C25, C27, C28, C29, C35, C38, C39, C42, C43, C48, C50, C51, C52, C54, C55, C57, C60, C64, C71, C8, C9, C11, C12, C15, C19, C26, C34, C37, C40, C44, C74, C75, C79	41	TOP	0402	CAP, 100nF, 16VDC, +-10%, 0402, CERAMIC MONOLITHIC CHIP, LF
				BOTTOM		
5	2F7956	C33, C47, C53, C56 C72 C41, C80	5	TOP	0402	CAP, 10nF, 50VDC, +-10%, 0402, CERAMIC MONOLITHIC CHIP, LF
			NL	BOTTOM		
6	4F4005	C1, C20, C3, C32, C36, C46, C49, C18	8	TOP	0603	CAP, 4.7uF, 6.3VDC, +-10%, 0603, CERAMIC MONOLITHIC CHIP, LF
				BOTTOM		
7	4F4018	C5, C10, C24, C30, C45, C59, C62, C13, C16	9	TOP	0603	CAP, 1uF, 25VDC, +-10%, 0603, CERAMIC MONOLITHIC CHIP, LF
				BOTTOM		
8	4F4014	C6, C31, C61, C63, C66, C78,	6	TOP	0805	CAP, 4.7uF, 16VDC, +-10%, 0805, CERAMIC MONOLITHIC CHIP, LF
9	5F1045	C68	1	TOP	0805	CAP, 1uF, 25VDC, +-10%, 0805, CERAMIC MONOLITHIC CHIP, LF
10	2F8794	C76	1	TOP	0805	CAP, 10uF, 16VDC, +-10%, 0805, X5R, CERAMIC MONOLITHIC CHIP, LF
11	7E0929	C69	1	TOP	0402	CAP, 0.22uF, 10VDC, +-10%, 0402, X5R, CERAMIC MONOLITHIC CHIP, LF
12	7E0930	C73, C77	2	TOP	0402	CAP, 0.33uF, 10VDC, +-10%, 0402, X5R, CERAMIC MONOLITHIC CHIP, LF

Eastman Kodak Company			
Title CDU Timing Board 20342411 BOM			
Size C	Number MTD/PS-1046	Rev 3	
Date 10-29-2008	Drawn by BPF Sheet 1 of 5		

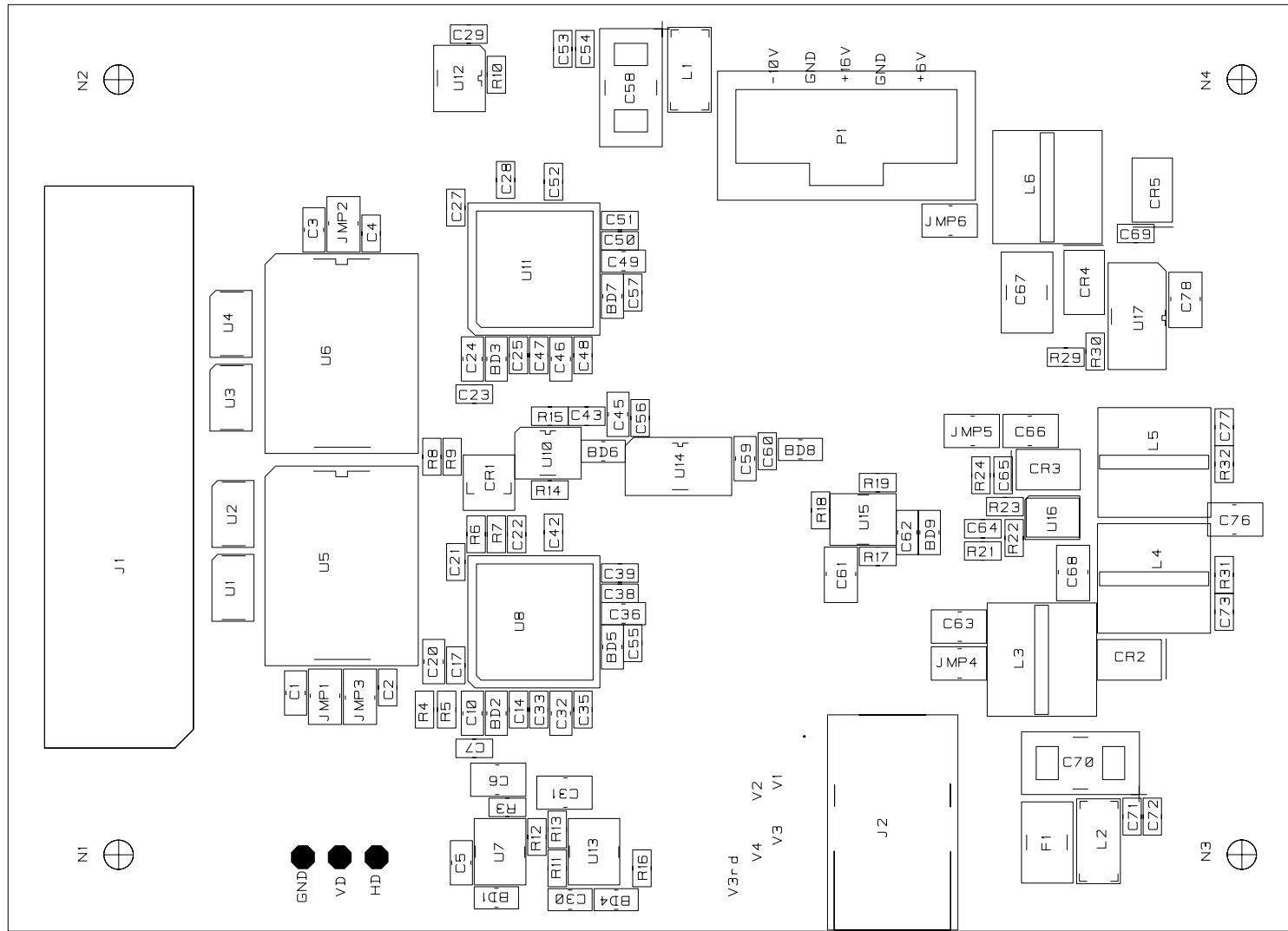
A B C D E F

Item	KODAK PN	REF DESIG	Qty	Side	GEOMETRY	DESCRIPTION
13	5F3969	C65	1	TOP	0402	CAP, 33pF, 50VDC, +-5%, 0402, CERAMIC MONOLITHIC CHIP, LF
14	7E7251	C67	1	TOP	1210	CAP, 4.7uF, 25VDC, +-10%, 1210, CERAMIC MONOLITHIC CHIP, LF
15	7E0904	CR2, CR3	2	TOP	CASE457	RECTIFIER, MBRM120ET1G, DIODE SCHOTTKY, 20V, 1A, 457, LF
16	7H7175	CR4, CR5	2	TOP	CASE457	DIODE, MBRM140, SCHOTTKY, 1A, 40V, CASE 457, LF
17	5F3757	CR1	1	TOP	SOT23	DIODE, MMBD914, 100V, SOT-23, LF
18	5F7187	F1	1	TOP	fuse_smdc075_h.025	MINISMDC075F-2, 1.5A resettable fuse, LF
19	5F7559	J1	1	TOP	CONN_76PIN_MICTOR	CONN, MICTOR, STRAIGHT, 76 POS, SMT, LF
20	5F9682	J2	1	TOP	PJ-002A-SMT	JACK/POWER, RIGHT ANGLE, SMT, LF
21	5F4402	JMP2, JMP3, JMP4, JMP5, JMP6, JMP1	5	TOP NL	0805 TOP	RES, 0 mohm, 125 mW, 0805, ZERO OHM JUMPER, LF
22	7E0888	L1, L2	2	TOP	3TermFilter	FILTER/EMI-RFI, 1.5A, 20VDC, SMT, LF
23	5F3958	L4, L5, L6	3	TOP	CDRH6D28	INDUCTOR, 10uH, +-30%, SMT, FIXED, LF
24	7E0905	L3	1	TOP	CDRH6D28	INDUCTOR, 15uH, +-30%, SMT, POWER, LF
25	5F7837	P1	NL	TOP	104363-4	CONN, MTE, STRAIGHT, 5 POS, THRU-HOLE, LF
26	7E0906	P2	1	BOTTOM	QTE-040	CONN, QTE, STRAIGHT, 80 POS, SMT, LF
27	4F4182	R10, R16, R19, R30	4	TOP	0402	RES, 10 kohm, 1%, 63 mW, 0402, FLAT CHIP THICK METAL FILM, LF
28	4F4241	R13, R21	2	TOP	0402	RES, 150 kohm, 0.5%, 63 mW, 0402, FLAT CHIP THICK METAL FILM, LF
29	7E0909	R17, R22, R23	3	TOP	0402	RES, 15.0 kohm, 0.5%, 63 mW, 0402, FLAT CHIP THICK METAL FILM, LF
30	7E0920	R24	1	TOP	0402	RES, 226 kohm, 1%, 63 mW, 0402, FLAT CHIP THICK METAL FILM, LF
31	7E0915	R12	1	TOP	0402	RES, 27.0 kohm, 1%, 63 mW, 0402, FLAT CHIP THICK METAL FILM, LF
32	5F8651	R18	1	TOP	0402	RES, 100 kohm, 1%, 63 mW, 0402, FLAT CHIP THICK METAL FILM, LF

Eastman Kodak Company			
Title CDU Timing Board 20342411 BOM			
Size C	Number MTD/PS-1046	Rev 3	
Date 10-29-2008	Drawn by BPF Sheet 2 of 5		

Item	KODAK PN	REF DESIG	Qty	Side	GEOMETRY	DESCRIPTION
33	7E0921	R3	1	TOP	0402	RES, 240 kohm, 1%, 63 mW, 0402, FLAT CHIP THICK METAL FILM, LF
34	7E0922	R11	1	TOP	0402	RES, 24.9 kohm, 1%, 63 mW, 0402, FLAT CHIP THICK METAL FILM, LF
35	7E0923	R29	1	TOP	0402	RES, 40.2 kohm, 1%, 63 mW, 0402, FLAT CHIP THICK METAL FILM, LF
36	5F7033	R5, R6, R8, R9 , R14, R15 R4, R7	6	TOP	0402	RES, 50 mohm, 63 mW, 0402, ZERO OHM JUMPER, LF
			NL	TOP		
37	5F7042	R31, R32	2	TOP	0402	RES, 4.7 kohm, 5%, 63 mW, 0402, FLAT CHIP THICK METAL FILM, LF
38	4F4228	R25, R26	NL	BOTTOM	0402	RES, 75 ohm, 1%, 63 mW, 0402, FLAT CHIP THICK METAL FILM, LF
39	7E0924	U8, U11	2	TOP	CSPBGA105_.65mm_8x8	IC, CCD SIGNAL PROCESSOR, AD9920A, CSP_BGA-105, LF
40	7E0926	U12	1	TOP	SOT23-6	IC, A/D CONVERTER, ADC081, SOT23-6, LF
41	7E0925	U9	1	BOTTOM	F4100	OSCILLATOR, 40MHZ, +-50PPM, 4-PIN, SMT, LF
42	7E8805	U1, U2, U3, U4	4	TOP	RES_8_.5mm	RESISTOR NETWORK, 47 OHM, 5%, 0402-8, 8 ISOLATED, LF
43	7E0932	U14	1	TOP	MSOP-8	IC, VOLTAGE REG, LT1521, 3.3V, 300mA, MSOP-8, LINEAR, FIXED, LF
44	7E0890	U7	1	TOP	SOT23-5	IC, VOLTAGE REG, LT1761, 100mA, SOT-23, LINEAR, LF
45	7E0933	U17	1	TOP	MSOP-8-PWRPAD	IC, VOLTAGE REG, LT1936, MSOP-8, SWITCHING, STEP DOWN, LF
46	7E0931	U13, U15	2	TOP	SOT23-5	IC, VOLTAGE REG, LT1964, -5V, 200mA, LINEAR, NEG, LF
47	7E0934	U16	1	TOP	DFN3mmx3mm-10	IC, VOLTAGE REG, LT3471, DFN-10, SWITCHING, LF
48	7E0936	U10	1	TOP	SOT23-6	IC, DIGITAL, 74LVC2G04, SOT23-6, INVERTER, DUAL, LF
49	7E0937	U5, U6	2	TOP	TSSOP-48	IC, DIGITAL, 74LVT16244, TSSOP-48, BUFFER/DRIVER, 16-BIT, LF

Eastman Kodak Company			
Title CDU Timing Board 20342411 BOM			
Size C	Number MTD/PS-1046	Rev 3	
Date 10-29-2008	Drawn by BPF Sheet 3 of 5		



PRIMARY SIDE SILK (VIEWED FROM PRIM SIDE)

PRIMARY SIDE ARTWORK (VIEWED FROM PRIM SIDE)

Eastman Kodak Company			
Title CDU Timing Board 20342411 ASM top			
Size C	Number MTD/PS-1046	Rev 3	
Date 10-29-2008	Drawn by BPF Sheet 4 of 5		

A

B

C

D

E

F

Timing Board PCB 20339742



C8

C9

C11

C12

C18

C19

C16

C13

C34

C15

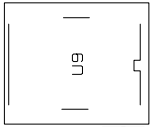
C26

C17

C4

R25

C41



C44

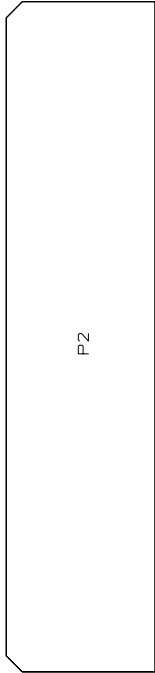
C74

C75

C79

C80

R26



P2

Eastman Kodak Co.
Image Sensor Solutions
Dual Channel Interline CDU
8/13/2008

SECONDARY SIDE S1JK (VIEWED FROM PRIM SIDE)
SECONDARY SIDE VRLWOK (VIEWED FROM PRIM SIDE)

Eastman Kodak Company			
Title CDU Timing Board 20342411 ASM bot			
Size C	Number MTD/PS-1046	Rev 3	
Date 10-29-2008	Drawn by BPF	Sheet 5 of 5	

A

B

C

D

E

F